



Christ the Servant Lutheran Church

Christ the Servant Lutheran Church is a progressive, sacramental community dedicated to living out the implications of Jesus' love ethic. Our acronym, CTS, not only refers to our name, but also refers to our three primary tasks: to **Care**, **Teach** and **Serve**. We strive to be a place of generous caring, lively study and committed service to the world. We welcome you to get to know us!



Our Mission

Called to love God, we

- + worship as a Christian body rooted in traditional Lutheran liturgy,
- + study diligently, encouraging questioning and intellectual curiosity,
- + live prayerfully,
- + and care for God's creation.

Called to love our neighbors, we

- + invite and welcome all people,
- + share God's unconditional love,
- + encourage faith formation
- + give generously and thankfully,
- + and following Jesus' example, we serve those in need and advocate for justice.

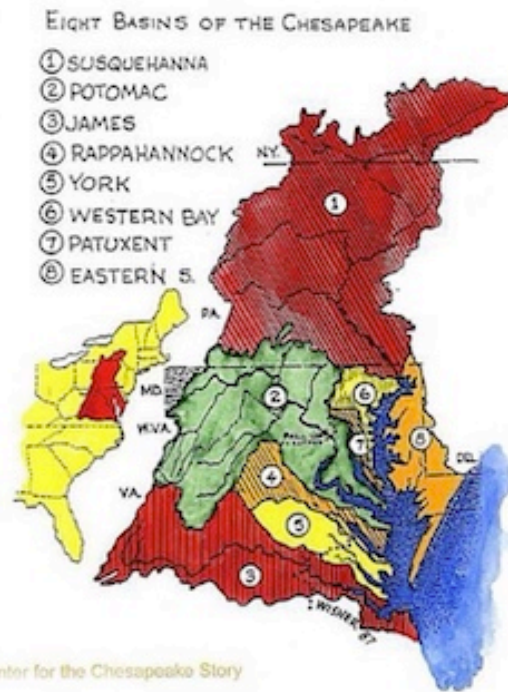
Our Vision

Christ the Servant seeks to be a home for people
— wherever they are on their spiritual journey —
where they are safe, accepted, cared for,
and then challenged to grow in Christ
and sent out to love and serve in the world.

Do unto those down stream as you would
 have those up stream do unto you



The Chesapeake Bay Watershed encompasses 64,000 square miles - and it all flows downhill to one Bay.



God Makes the Rain
 ... But we make the Runoff



Rain falls here and combines with pollutants



Heads to the drains and brings with it all pollutants in its path - it is now polluted runoff



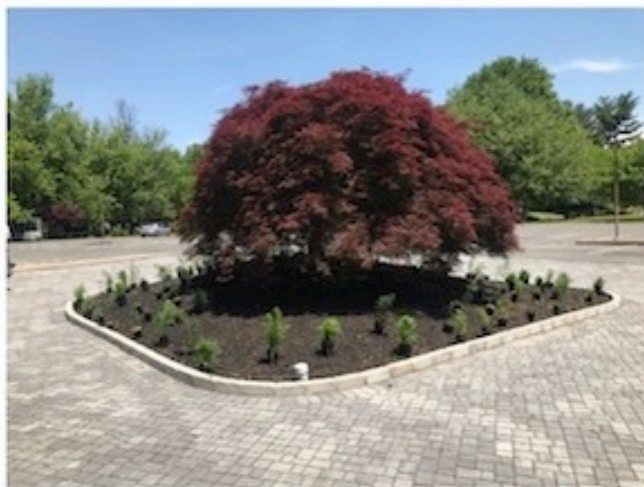
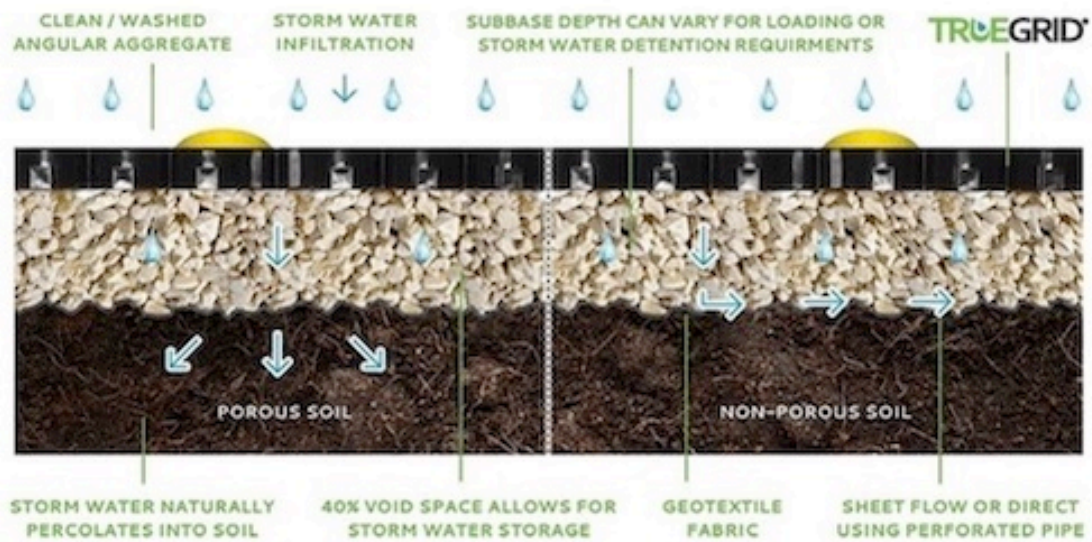
Polluted runoff empties into our streams and rivers which lead to the Bay

Permeable Paver Project



Before

Permeable pavers allow stormwater to infiltrate into underlying soils, promoting pollutant treatment and groundwater recharge.



After

Native plants help you save money & the planet



- Native plants are healthier and stronger because they have a better resistance to local weather
- Native plants create wildlife habitat in your back yard providing food & shelter
- Native plants help the environment:
 - A.They use less water, fertilization, and pesticides
 - B.They can prevent water runoff and improve air quality by reducing air pollution
 - C.Decrease pollution and eliminate the need for mowers
 - D.They have the ability to pull and store excess carbon
- Native plants are low maintenance
- Native plants add splendor to your landscape (variety of colors and textures, varying in height and bloom times).



Who can help you:



DEPARTMENT OF
**ENVIRONMENTAL
PROTECTION**

Department of Environmental Protection
<https://www.montgomerycountymd.gov/dep/>



Chesapeake Bay Trust
<https://CBTrust.org>

UNIVERSITY OF
**MARYLAND
EXTENSION**

University of Maryland Sea Grant
Extension
<https://Extension.UMd.edu>



Chesapeake Bay Landscape
Professional Certification Program
<https://CBLPro.org>



Interfaith Partners for the Chesapeake
<https://www.InterfaithChesapeake.org>



Muddy Branch Alliance
ACTING TOGETHER LOCALLY

Seneca Creek Watershed Partners
<https://MuddyBranch.org/SenecaCreek/>



Christ the Servant Lutheran Church
<https://CTSLutheranELCA.org>

Going Forth - What can You do?



Advocate for environmental protection



Start a Green Team



Support Environmental Charities



Help clean up streams



Install permeable paver driveways



Install Rain Barrels and Cisterns



Use less pesticides, fertilizers, and de-icers



Drain cleaning and stenciling



Use less consumables and more reusables



Grow native plants to save bees, support pollinators



Build Rain Gardens



Plant trees

